

THE VICTORIA II



NUMBER OF FLOORS: 2
GARAGE: 2
BEDROOMS: 4
BATHROOMS: 2.5

DATE: MAY 23, 2008

Greth CRAFTED WITH CARE
Homes SM
SINCE 1973

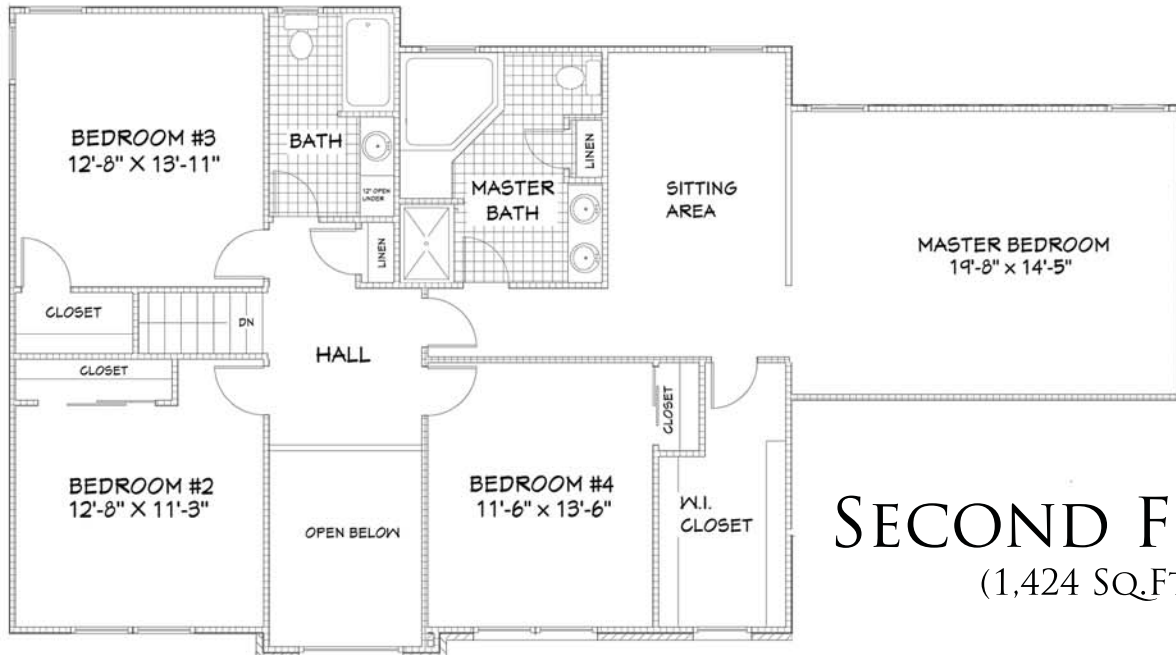
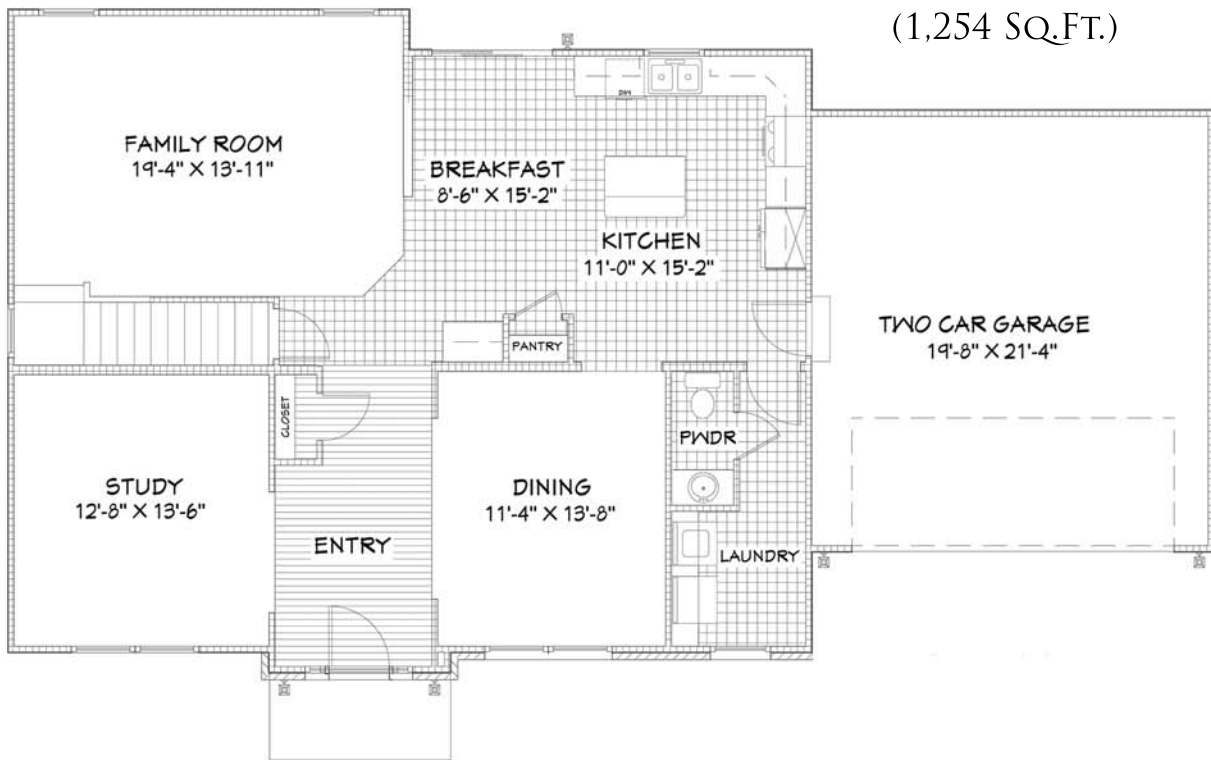
WWW.GRETHHOMES.COM

9' FIRST FLOOR CEILING PACKAGE

TOTAL LIVING AREA 2,678 SQ.FT.

FIRST FLOOR

(1,254 SQ.FT.)



SECOND FLOOR

(1,424 SQ.FT.)