

THE OXFORD



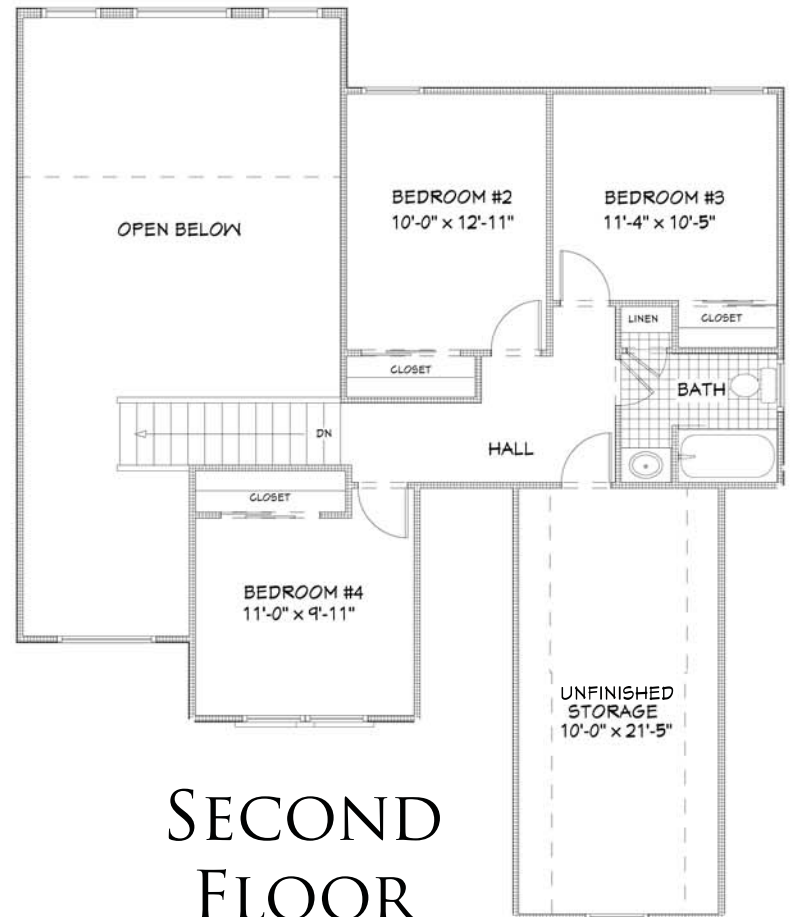
TOTAL LIVING AREA 2,057 SQ.FT.

NUMBER OF FLOORS: 2
 GARAGE: 2
 BEDROOMS: 4
 BATHROOMS: 2.5

DATE: OCTOBER 5, 2009

FIRST FLOOR
 (1,422 SQ.FT.)

8' FIRST FLOOR CEILING PACKAGE



SECOND FLOOR
 (635 SQ.FT.)

Greth CRAFTED WITH CARE
Homes SM
 SINCE 1973

WWW.GRETHHOMES.COM