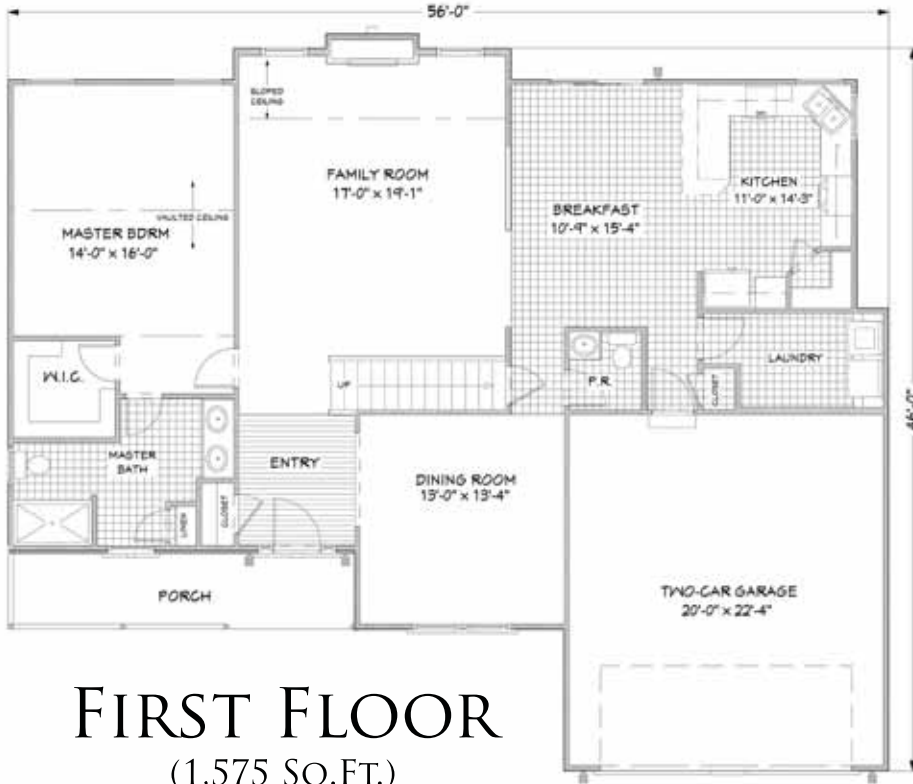


THE OXFORD II



TOTAL LIVING AREA 2,305 SQ.FT.

NUMBER OF FLOORS: 2

GARAGE: 2

BEDROOMS: 4

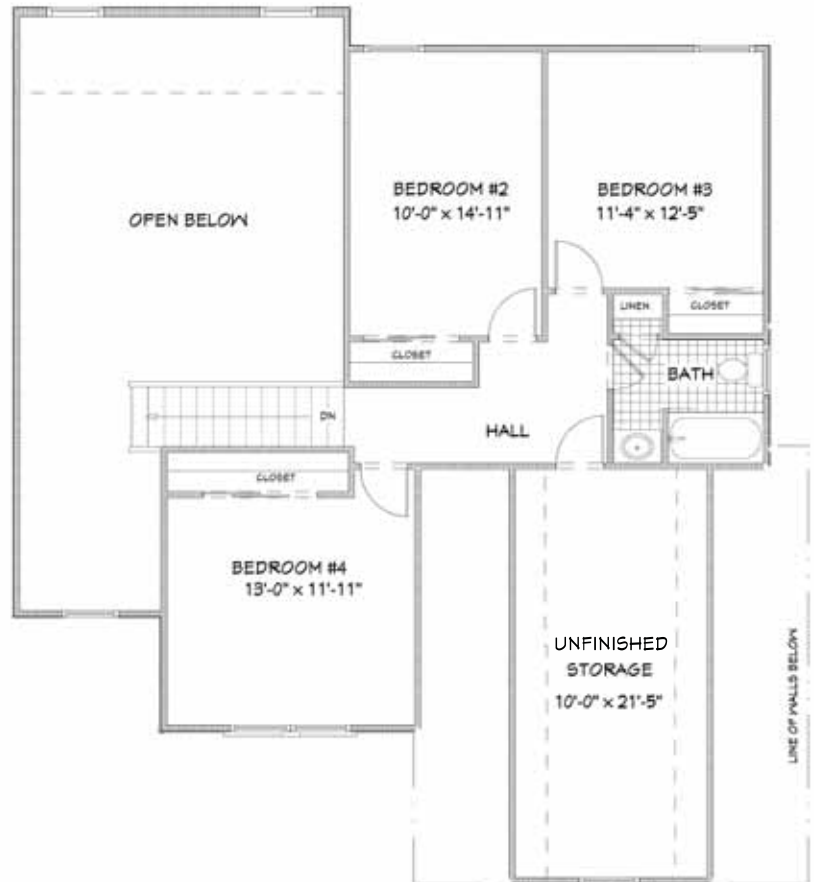
BATHROOMS: 2.5

DATE: OCTOBER 13, 2009

FIRST FLOOR

(1,575 SQ.FT.)

8' FIRST FLOOR CEILING PACKAGE



SECOND FLOOR

(730 SQ.FT.)

Greth CRAFTED WITH CARE
Homes SM
 SINCE 1973

WWW.GRETHHOMES.COM