

THE OXFORD II

ASHLEY RUN #24
35 HARRY AVENUE
READING, PA 19607



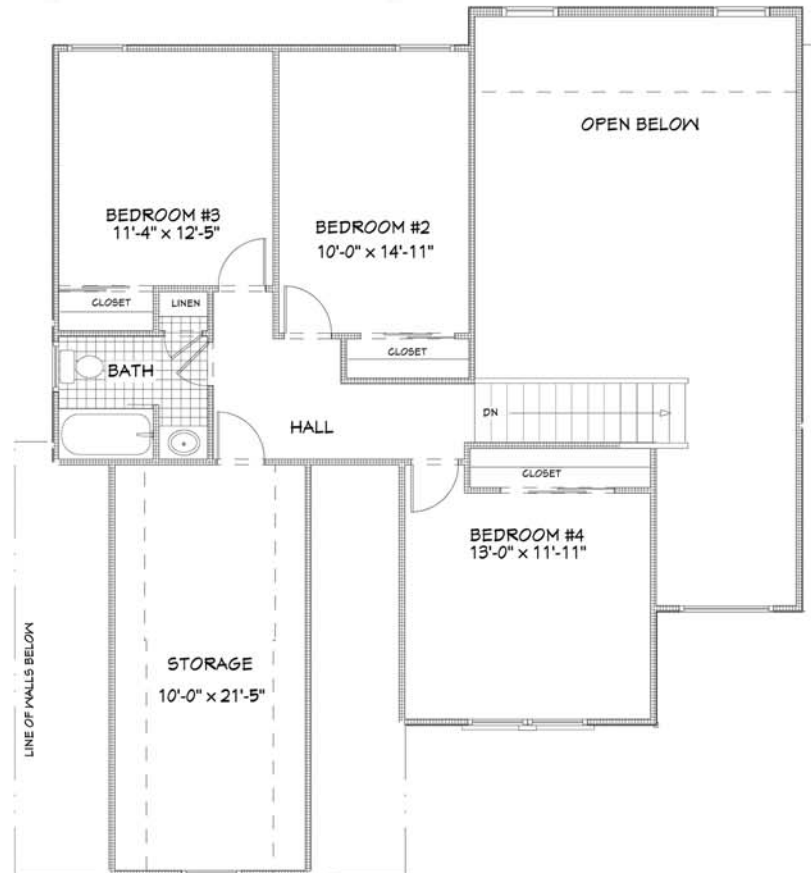
TOTAL LIVING AREA 2,305 SQ.FT.

NUMBER OF FLOORS: 2
GARAGE: 2
BEDROOMS: 4
BATHROOMS: 2.5

UPDATED: SEPTEMBER 4, 2009

SECOND FLOOR

(730 SQ.FT.)



Greth CRAFTED WITH CARE
Homes SM
SINCE 1973

WWW.GRETHHOMES.COM